

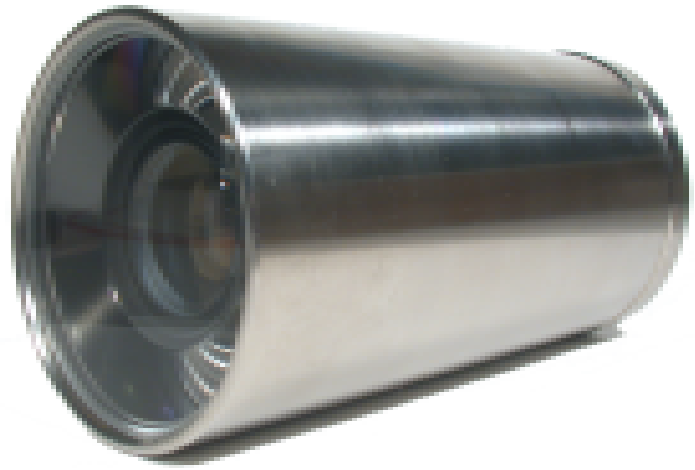
Insite Pacific introduces the **Pegasus Mark II**, high resolution, color zoom, CCD camera.

The **Pegasus Mark II** has a 30X optical zoom lens and 32X digital zoom with auto focus capability. It will provide exceptional images in close-up and stand-off inspection applications.

The **Pegasus Mark II** is provided in a titanium housing with a 4,500m depth rating as standard with options for full ocean depth rating.

An exciting new feature of this camera is that it can provide either an NTSC or PAL video output, which eliminates the need for stocking two different types of cameras.

This camera has an Onscreen Display (OSD), which is activated by the focus and zoom switches. Control of Focus Auto/Manual, Zoom Speed, White Balance, NTSC or PAL video output, and many more settings are all done with the focus and zoom switches. The camera can also be controlled via a VISCA based RS232 or RS485 serial interface.



### **Features**

- 30X Optical zoom and 32X Digital Zoom
- Titanium Pressure Housing
- Onscreen Display (OSD) for Camera Setup
- RS232 or RS485 Communication Interface
- NTSC or PAL Video Output From the Camera
- 2.48 Megapixel Sensor



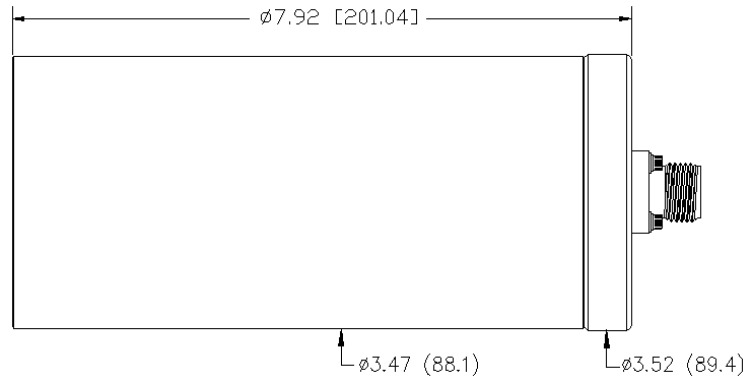
### **Applications**

- Work class ROV main color zoom camera
- Diver color camera
- Underwater security and surveillance
- Environmental and archaeological surveys

The above picture shows the optional 6.5km depth rated housing.

# Insite Pacific - Pegasus Mark II

## Specification



Dimensions above shown for 4.5km Housing

All measurements in inches (mm)

### Optical

**Lens:** 4.3mm to 129mm, 30X Optical Zoom lens  
**Focus Range (At full wide):** 0.5" (12.7mm) to Infinity  
**Focus Range (At full telephoto):** 29" (736.6mm) to Infinity  
**Iris Range:** F1.6 to Closed

<b>Angle of view in water:</b>	Zoom Wide	Zoom Tele
<b>Diagonal</b>	78.3°	3.2°
<b>Horizontal</b>	66.1°	2.5°
<b>Vertical</b>	52.2°	1.9°

### Communication Interface

<b>Serial Interface</b>	RS232 or RS485
<b>Protocol</b>	VISCA
<b>Baud Rate</b>	9600 bps

### Focus, Zoom, and Iris Control Voltages

Bipolar, Tri-State, 2-Wire, Single Wire with support for all industry standard control voltages.

### Environmental

**Depth (as shown)** 4,500 Meters (14,764 ft)  
(Various depth ratings are available)  
**Operating Temperature** 23°F to 122°F (-5°C to +50°C)  
**Storage Temperature** -4°F to 140°F (-20°C to 60°C)

### Electrical

**Resolution** 700 Horizontal TV lines  
**Min. Illumination** Color: DSS(1/7.5s); 0.125 lux  
B/W: DSS(1/7.5s); 0.025 lux  
**Total Pixels** 2.48M Pixels  
**Video Output** 1.0 Vpp Composite Video  
**Signal to Noise Ratio** Greater than 50dB (AGC off)  
**Camera Power** 15-30 Vdc at nominal 250 mA

### Mechanical

**Weight in Air** 5.5 lb. (2.5 kg)  
**Weight in Water** 2.75 lb. (1.2 kg)  
**Housing Material** 6AL / 4V Titanium  
**Connector** Customer Specified

### Video Line Drivers (Optional)

Adjustable for various types of cables.  
Usable video up to 5000 ft (1,500m) of cable.

All specifications are subject to change in line with Insite Pacific's policy of continual product development.

## Insite Pacific Inc.

6837 Nancy Ridge Drive, Suite G, San Diego, California, 92121, USA  
Phone (858) 523-0642 Fax (858) 523-0643  
Website: [www.insitepacific.com](http://www.insitepacific.com) Email: [sales@insitepacific.com](mailto:sales@insitepacific.com)

Issue April 4, 2019