

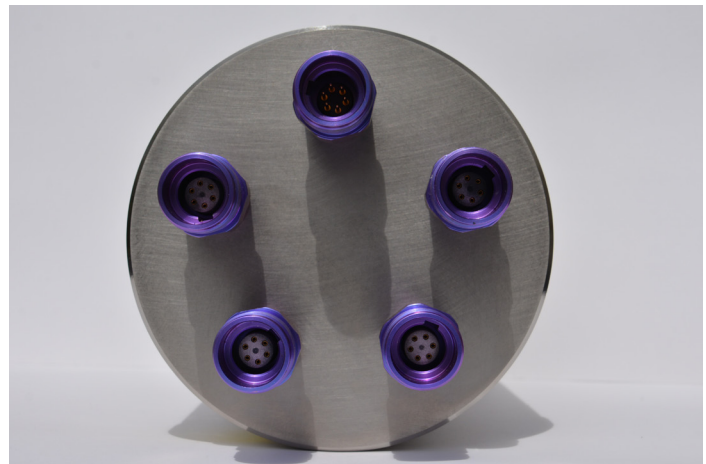
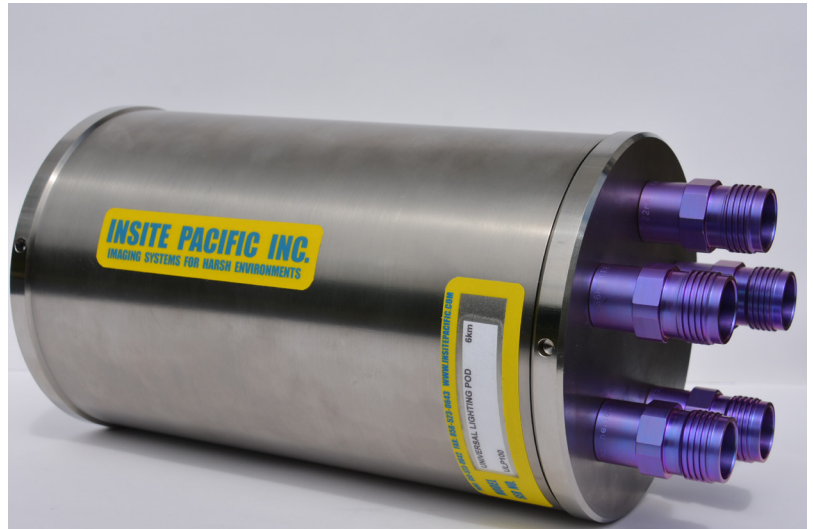
Insite Pacific Inc., an internationally recognized leader in underwater video, is proud to introduce the **Universal Lighting Pod (ULP)**, an innovative and pioneering concept for multi function reliable integration of LED lights to workclass ROV's and tooling modules.

The ULP provides full protection of ROV power to underwater lights including resettable fuses, AC Power as standard with DC power optional.

The ULP is supplied with configurable serial communication (RS232 or RS485) lighting control or configurable analog (0 - 5VDC, 0 - 10VDC) lighting control providing full compatibility with virtually all current LED underwater lights and workclass ROV's.

The ULP analog control signals are all fully opto-isolated.

The ULP is supplied in a 6Km depth rated titanium housing as standard.



Photos above are of the Universal Lighting Pod.

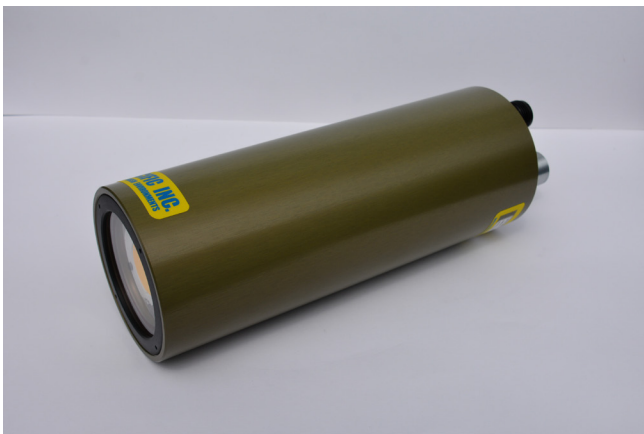
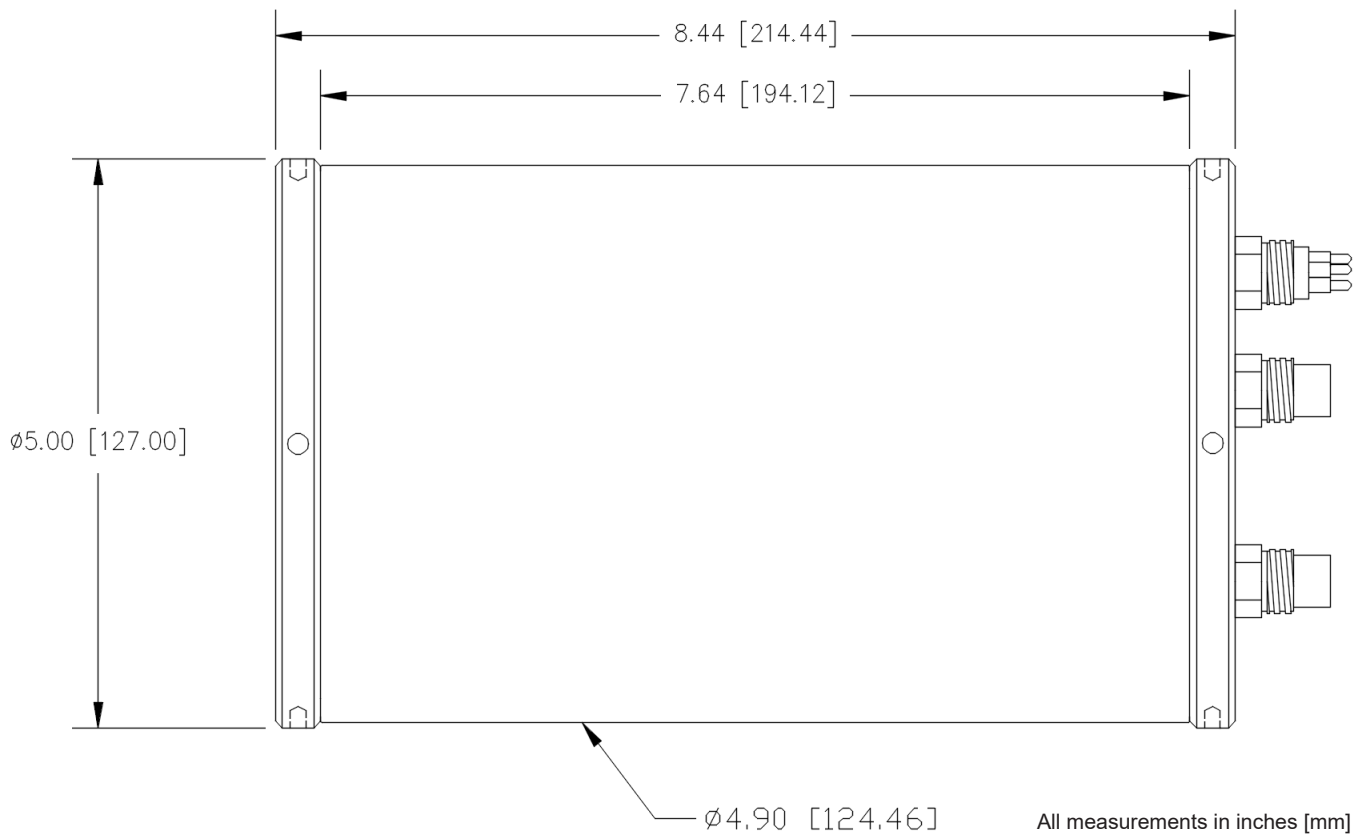


Photo above is of the AC powered Helios 11K LED Light.

Features

- ❑ AC power as standard with optional DC power , fully protected
- ❑ Optional Serial or Analog Signal Lighting Control, Configurable and Fully Isolated
- ❑ Compatible With Almost All Underwater LED lights and Workclass ROV's
- ❑ Compact Connector Manifold
- ❑ Field Proven 6Km Titanium Housing
- ❑ Control of up to Four Lights
- ❑ Oceanographic Research
- ❑ Military

Insite Pacific Inc. - Universal Lighting Pod



Specifications:

Electrical

AC Voltage Range: 100-264VAC, 47-63Hz
Optional Dimming Control: RS232, RS485, 0-5VDC, 0-10VDC, 4-20ma
Light Control: Minimum 1 and up to 4 Lights Maximum

Options

LED Lights: Insite Pacific Helios 11K Lights or Customer Specified
Power Input: AC or DC as required by LED lights
Dimming Control: Serial or Analog as Required to Control LED Lights
On/Off Light control: Analog, +5VDC

Mechanical

Dimensions Above & Weights Below are for the 6Km Depth Rated Housing.

Weight In Air: 5.4 kg (12.0 lbs)
Weight In Water: 2.83 kg (6.25 lbs)
Housing Material: 6AL / 4V Titanium
Connector: CRE A Series Connectors as Standard, or Client Specified

Environmental

Depth: 6Km as Standard, Other Depth Ratings Available
Operating Temperature: 0°C to +48.9°C (32°F to 120°F)
Storage Temperature: -20°C to +60°C (-4°F to 140°F)

All specifications are subject to change in line with Insite Pacific's policy of continual product development.

INSITE PACIFIC Inc.

6837 Nancy Ridge Drive, Suite G, San Diego, California, 92121, USA

Phone (858) 523-0642 Fax (858) 523-0643

Website: www.insitepacific.com Email: sales@insitepacific.com

Issue June 28, 2021